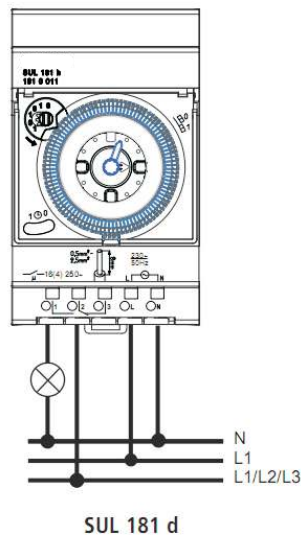


SYN 161 d 161 0 011
 SUL 181 d 181 0 011



SUL 181 d

ENGLISH

Anschluss/Montage

⚠ WARNING

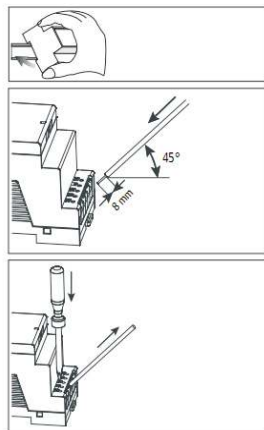


Lebensgefahr durch elektrischen Schlag!
 ➤ Montage ausschließlich durch Elektrofachkraft!

- Spannung freischalten!
- Benachbarte, unter Spannung stehende Teile abdecken oder abschränken.
- Gegen Wiedereinschalten sichern!
- Spannungsfreiheit prüfen!
- Erden und kurzschließen!

nur bei SUL 181 d

- Quarzwerk startet bei angelegter Spannung erst nach einigen Minuten.
- Die volle Gangreserve wird nach ca. 5 Tagen erreicht.



Technical Data

| | SYN 161 d | SUL 181 d |
|----------------------------|--|--|
| Operating voltage: | 230 V~, +10 %/-15 % 50 Hz | 110–230 V~, 50–60 Hz |
| Power consumption: | max. 1 VA | max. 1 VA |
| Contact: | two-way switch | two-way switch |
| Gap: | <3 mm (μ) | <3 mm (μ) |
| Contact material: | Ag | Ag |
| Switching capacity: | 16 A, 250 V~, cos φ = 1 4 A, 250 V~, cos φ = 0,6 | 16 A, 250 V~, cos φ = 1 4 A, 250 V~, cos φ = 0,6 |
| Switching capacity min.: | 24 V / 100 mA AC | 24 V / 100 mA AC |
| Incandescent lamp load: | 1100 W | 1100 W |
| Fluorescent lamp load: | parallel-corrected 2 x 40 W (4,7μF) | parallel-corrected 2 x 40 W (4,7μF) |
| Perm. ambient temperature: | -20 °C ... +55 °C | -20 °C ... +55 °C |
| Protection class: | II in acc. with EN 60730-1 for designated installation | II in acc. with EN 60730-1 for designated installation |
| Protection rating: | IP 20 in accordance with EN 60529 | IP 20 in acc. with EN 60529 |
| Time accuracy: | synchronised with mains | ± ±1 s/s day at +20 °C |
| Power reserve: | - - | R 200 h (230 V), R 100 h (110 V) |
| Pollution degree: | 2 | 2 |
| Type: | 1 BRTU | 1 BSTU |

ENGLISH

Basic safety instructions

⚠ WARNING



Danger of death through electric shock or fire!
 ➤ Installation should only be carried out by a qualified electrician!

Designated use

- The time switch can be used for lighting, ventilation, fountains, advertising hoardings etc.
- Only for use in closed, dry rooms
- Installation on DIN top hat rail (in accordance with DIN EN 60715)
- The switching of any external wire is permitted, switching of SELV is not permitted.

Disposal

Dispose of device in environmentally sound manner

Set time

e.g. 3:00 (morning)

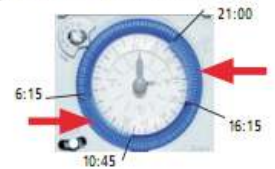


e.g. 15:00 (afternoon)

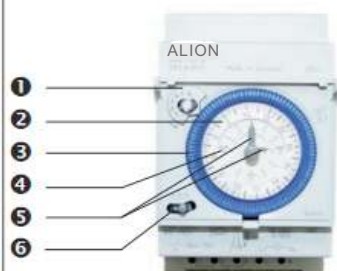


Set switching times

e.g. 6:15–10:45; 16:15–21:00 ON



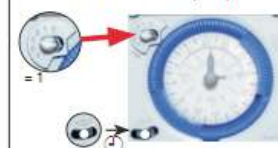
Description



- 1 Switching pre-selection/manual setting
- 2 Program timing disc
- 3 Switching segments (1 = 15 mins)
- 4 Morning/afternoon (AM/PM) time display
- 5 Hand for setting time (hours and minutes) can be adjusted anti-clockwise and clockwise; turn minute hand firmly to left
- 6 Three way switch: Permanent ON – AUTO – Permanent OFF

Set manual operation/switching pre-selection

in advance 3:00 ON (= 1)



The time switch operates the set switching times, i.e. it returns to program.

Set 1 – 0 – 0 permanent switching



Program is not operated.
 1 = Permanent ON
 0 = Permanent OFF

Connection, technical data see on the back side